

# CRIMSON COMPANION

A NEW STUDENT GUIDE TO RCU | 2024-2025

# MEET YOUR CRIMSON LEADERS



**Autumn McCullough**  
is an elementary education  
major from Harrison  
Township. She has been in  
theater for 12 years!



**Gabbi DiCosmo**  
is a sport management  
major from Oxford who  
loves to cook!



**N'Oreal Boyer**  
is a business management  
major from Detroit, MI who  
owns 123 pairs of shoes...and  
counting.



**Skyler Hill**  
is a sport management  
major from Carlsbad, NM  
who ran cross country  
for five years and is now  
on RCU's esports team.



## message from the PRESIDENT

Dear Warrior,

We are thrilled to welcome you to Rochester Christian University! In spring of 2024, Rochester University became Rochester Christian University (RCU). At RCU, we are committed to providing an exceptional educational experience rooted in our Christian heritage.

Founded in 1959 as North Central Christian College, we changed our name to Michigan Christian College in 1978. Then in 1997, we became Rochester College, though we remained a Christian institution. In today's world, significant challenges can result from calling yourself 'Christian' because some have used that word to exclude rather than to include. But not at Rochester Christian University. Following the example of Jesus, we are committed to loving and valuing every human as a bearer of the image of God. We are dedicated to standing with the oppressed and marginalized, contending for justice, and doing all in our power to create a welcoming, loving, and peaceful space for all; you belong here.

### Rochester Christian University will remain committed to the following:

- Unity: RCU promotes a unified Christian identity that goes beyond denominational lines.
- Open Table: As Jesus showed us, everyone is welcome and belongs at the Table of the Lord. RCU invites, embraces and welcomes all of God's diverse children.
- Paradoxical Fellowship: RCU strives to create a community where the first are last and the last are first, promoting countercultural and world-transforming gospel values.

We are excited about this new chapter in our university's history and are happy to introduce you as the first class of Rochester Christian University!

*Brian L. Stogner*

Brian L. Stogner, Ph.D.

STUDENT FOCUS

CONTINUOUS IMPROVEMENT

DIVERSITY

STEWARDSHIP

COLLEGIALITY

*RCU prepares students for professional and personal success as they serve in God's world.*

## TABLE OF CONTENTS

4	Degree Options
6	Warriors Thrive
7	Student Success & Retention
8	Important Dates
9	Directory
10	RCU Lingo
12	Campus Map
14	Student Financial Services Checklist
15	Online Learning // Textbooks
16	The RCU Portal
17	Center for Student Life
18	Community Life + Worship
19	Residence Life
20	Where To Go When
21	Campus Life
23	Campus Jobs // Mail // Eats
24	Athletics
26	The RCU App
27	RCU Alumni Association
28	Get Connected
29	Notes
31	Chief Financial Credit Union

# DEGREE OPTIONS

## BACHELOR OF ARTS (BA)

**English**

**Theatre**

*Tracks available in:*

*Performance, Production, and Musical Theatre*

## BACHELOR OF BUSINESS ADMINISTRATION (BBA)

**Accounting**

**Financial Planning**

**Management**

**Nonprofit Management**

**Sport Management**

**Sport Management:**

**Esports & Gaming Administration**

## BACHELOR OF SCIENCE IN NURSING (BSN)

**Nursing**

## BACHELOR OF SCIENCE (BS)

**Behavioral Science**

*Track available in: Social Work*

**Biology**

*Tracks available in:*

*Cellular/Molecular Biology and Environmental Biology*

**Christian Ministry**

**Data Analytics**

**Digital Marketing**

**Education, Elementary**

*Majors available in:*

*Lower Elementary,*

*Upper Elementary*

*and Learning Disabilities*

**Education, Secondary**

*Majors available in:*

*English Education, Integrated Science Education,*

*Learning Disabilities and Social Studies Education*

**Healthcare Administration**

**Health Sciences**

*Tracks available in: Pre-Pharmacy,*

*Pre-Physical Therapy and Research Methods*

**Information Systems & Cybersecurity**

**Interdisciplinary Studies**

*This program allows students to combine*

*two academic disciplines in innovative ways*

*to meet market demands*

**Mass Communication**

*Track available in: Integrated Media*

**Neuroscience**

**Psychology**

**Public Health**

**Strategic Leadership**

+  
DEGREE  
INFORMATION



+  
RCU'S ACADEMIC  
PHILOSOPHY



# SHOW YOUR TRUE COLORS.

Shop for all new RCU Warrior gear in-store and online.

*Also available in-store:*

- + **School Supplies**  
*(including Blue Books for testing)*
- + **Gift certificates**

*The Campus Store does not stock textbooks. These must be purchased online via Barnes & Noble College. See page 14.*



**IN-STORE**

**RAC 121 | M–F 9 a.m. – 4 p.m. | 248.218.2076**

**campusstore@rochesteru.edu**



# WARRIORS THRIVE

## PREPARING FOR COLLEGE SUCCESS SEMINAR

If you are feeling any apprehension about transitioning to college, this seminar will provide the confidence boost you need. It is designed to give you the opportunity to navigate an online college classroom while exploring material that will provide a leg up once the school year begins.



**Time Commitment:**  
Approximately 10 to 15 hours to fully complete



**Facilitated by:**  
Student Success Team  
*Questions?*  
Email [advising@rochesteru.edu](mailto:advising@rochesteru.edu)



**Getting Started:**  
The seminar is delivered via Canvas, RCU's online learning platform. In late July, you will receive a link in your RCU email to self-enroll in the course.

### MUST DO:

If you have not already begun using your Rochester Christian University email account, now is the time to make that transition. Going forward, all communication will be sent to that email account. You will need to have it set up in order to log into Canvas to begin the seminar, then your first semester at RCU.



*"What I found most helpful was the mention of another perspective for each topic."*

*"This seminar helped me the most with navigating Canvas, so now I don't have those few awkward weeks of technical difficulties."*

**"THE SEMINAR GAVE ME THE MOTIVATION I NEEDED TO GET READY FOR SCHOOL."**



WARRIORS THRIVE

# STUDENT SUCCESS AND RETENTION

## CHARACTER COMMUNITY SERVICE



**Debi Rutledge**  
Dean of Student Success & Retention  
✉ [drutledge@rochesteru.edu](mailto:drutledge@rochesteru.edu)  
☎ 248.218.2192



**Teri Butcher**  
Director of Student Success & Retention  
✉ [tbutcher@rochesteru.edu](mailto:tbutcher@rochesteru.edu)  
☎ 248.218.2171



**Dr. Tania Kemp-Covington**  
Student Success Advisor & Career Support  
✉ [tkempcovington@rochesteru.edu](mailto:tkempcovington@rochesteru.edu)  
☎ 248.218.2171



**Barby Knepper**  
Student Success Coach  
Accommodation Officer & Testing Coordinator  
✉ [bknepper@rochesteru.edu](mailto:bknepper@rochesteru.edu)  
☎ 248.218.2137



**Lisa Rastigue**  
Student Success Coach  
ACE Manager  
✉ [lrastigue@rochesteru.edu](mailto:lrastigue@rochesteru.edu)  
☎ 248.218.2137



**Michele Stanton**  
Student Success Coach  
Student Success & Retention Coordinator  
✉ [mstanton@rochesteru.edu](mailto:mstanton@rochesteru.edu)  
☎ 248.218.2173

### THESE CORE VALUES

influence every interaction and partnership with our diverse student body, fostering a campus community that nurtures personal, relational and spiritual growth.

# IMPORTANT DATES

## LAST DAY TO WITHDRAW FROM CLASSES

### Fall 2024

Session A	9.27.24
16-week Courses	11.1.24
Session B	11.22.24

### Spring 2025

Session A	2.14.25
16-week Courses	3.21.25
Session B	4.11.25

### Summer 2025

Session A	6.6.25
16-week Courses	7.11.25
Session B	8.1.25

## PAYMENT DUE DATES

### Fall 2024

8.19.24
9.20.24
10.20.24
11.20.24

### Spring 2025

1.6.25
2.15.25
3.15.25
4.15.25

### Summer 2025

4.21.25
5.20.25
6.20.25



## CENSUS DATES

(Last day to drop/add full-term courses without penalty)

Fall 2024	8.30.24
Spring 2025	1.17.25

## DEADLINES TO APPLY FOR GRADUATION

Fall Graduation	10.1.24
Spring Graduation	2.1.25
Summer Graduation	8.1.25

\* If students want to participate in the spring ceremony, they must apply for graduation BEFORE Feb. 1, even if they are graduating in the summer.

# DIRECTORY

### Accommodations

☎ 248.218.2137  
✉ accommodations@rochesteru.edu



### ACE Lab

☎ 248.218.2173  
✉ acelab@rochesteru.edu



### Campus Security

☎ 248.218.2911; 248.765.8013  
✉ security@rochesteru.edu



### Advising and Career Support

☎ 248.218.2146  
✉ advising@rochesteru.edu  
🕒 Mon.—Thurs. 8:30 a.m. — 5 p.m.  
Fri. 8:30 a.m. — 4 p.m.



### Center for Student Life

☎ 248.218.2041  
✉ studentlife@rochesteru.edu  
🕒 Mon.—Thurs. 8:30 a.m. — 5 p.m.  
Fri. 8:30 a.m. — 4 p.m.



### Residence Life

☎ 248.218.2211  
✉ residencelife@rochesteru.edu  
🕒 Mon.—Thurs. 8:30 a.m. — 5 p.m.  
Fri. 8:30 a.m. — 4 p.m.



### Ham Library

☎ 248.218.2660  
✉ librariystaff@rochesteru.edu  
🕒 Mon.—Thurs. 8:30 a.m. — 5 p.m.  
Fri. 8:30 a.m. — 4 p.m.  
Sat. CLOSED



### Office of the Registrar

☎ 248.218.2091  
✉ registrar@rochesteru.edu  
🕒 Mon.—Thurs. 8:30 a.m. — 5 p.m.  
Fri. 8:30 a.m. — 4 p.m.



### Student Financial Services

☎ 248.218.2127  
✉ sfs@rochesteru.edu  
🕒 Mon.—Thurs. 8:30 a.m. — 5 p.m.  
Fri. 8:30 a.m. — 4 p.m.



### Cashier

☎ 248.218.2053  
🕒 Mon.—Thurs. 8:30 a.m. — 5 p.m.  
Fri. 8:30 a.m. — 4 p.m.

### Helpdesk (Maintenance/IT Support)

☎ 248.218.2080  
✉ helpdesk@rochesteru.edu  
🕒 Mon.—Fri. 8:30 a.m. — 5 p.m.

### Counseling Center

☎ 248.218.2197  
✉ mschroeder@rochesteru.edu  
📧 Appointments by email

## STUDENT LIFE

### CLW points

Points earned through RCU's Community Life + Worship program; see the Student Handbook for more information.

### Open House

Residence halls are open for visitation daily from 5 to 10 p.m.

### RCU App - Warrior Hub

Where you'll keep up with campus events, alerts, lost and found, and more. See pages 26 & 27.

### Student ID

The 10-digit number that connects your campus-wide records, including library and residential hall access, financial aid, meal plans, and more.  
ID # examples: A000012345 or 1000012345

### Greek Life

Greek organizations exist to support and embody the mission and values of student engagement by uniting students of common interests through the integration of faith, service, learning, living and leading. See page 20.

### Rush Week/RUSH

The period of time fraternities and sororities recruit students to their respective Greek life organizations.

### Pledging

The period of time future Greek members confirm their pledge to their respective Greek life organization.

## ACRONYMS

### EPIC | Academic Philosophy

*Exploring. Preparing. Integrating. Calling.*

We believe you have a unique story worth telling. In fact, we think your story can be epic. Our courses are designed to help you explore, prepare, integrate (connect and apply knowledge) and find your calling – while helping you succeed.

RCU.edu/epic

Learn more



### SAP | Satisfactory Academic Progress

Students must maintain a 2.0 cumulative grade point average and a 67% cumulative completion rate.

### LRAP | Loan Repayment Assistance Program

*RCU Pledge - Pursue your passion without the burden of debt.*

All incoming RCU freshmen are eligible for the RU Pledge, our innovative program that provides quarterly reimbursement of student loan payments if you earn less than \$50,000 per year after graduation.

RCU.edu/pledge

Learn more



## ACADEMICS

### Credit

The unit of measurement used for tracking progress toward degree completion. Each course you complete results in credits earned.

### Catalog

Think of the online course catalog as the official handbook of RCU. It is a source of information regarding academics, financial aid, the academic calendar, student life and more.

**TIP:** Use the search function!

Scan to read



### Full-time

When enrolled in 12 credit hours or more per semester, you are a full-time student.

### Good Academic Standing

When there are no limitations on your coursework/credit hours per semester.

### Official

All steps needed for the current semester are complete, including payments/payment arrangements made.

**Canvas** RCU's online course site.

### Prereq/Prerequisite

A course that is needed to be completed prior to taking a different (usually upper division) course.

### Days of week on course schedule

**M** Monday      **R** Thursday  
**T** Tuesday      **F** Friday  
**W** Wednesday

### LDW

Last day to withdraw from a class; see page 12.

### Drop a course

Removing a course from your schedule prior to Census Date (see page 9). Dropped courses do not appear on your transcript.

### Withdraw from a course

Removing a course from your schedule after you have attended. Withdrawn courses appear on your transcript with a grade of W, but they do not impact your grade point average. Withdrawing from a course is subject to the RCU refund policy, processed as of the last date of attendance.

Requires you to complete this form:



### Withdraw from all courses

Complete withdrawal from the university; subject to the RCU refund policy, processed as of the last date of attendance.

## WAYFINDING

### ACE

Academic Center for Excellence, our campus tutoring center, is a resource for both online and in-person tutoring, proof-reading of papers, setting a schedule, etc.

**AE/AW** Auditorium East/Auditorium West

**AG** Alma Gatewood

(Co-ed freshmen residential hall)

**Arena** The Garth Pleasant Arena

**CC** Campus Center

**DC** Dearborn Commons

(the lobby of Ferndale/Hoggatt Halls)

**F/H** Ferndale-Hoggatt Hall (co-ed residential hall)

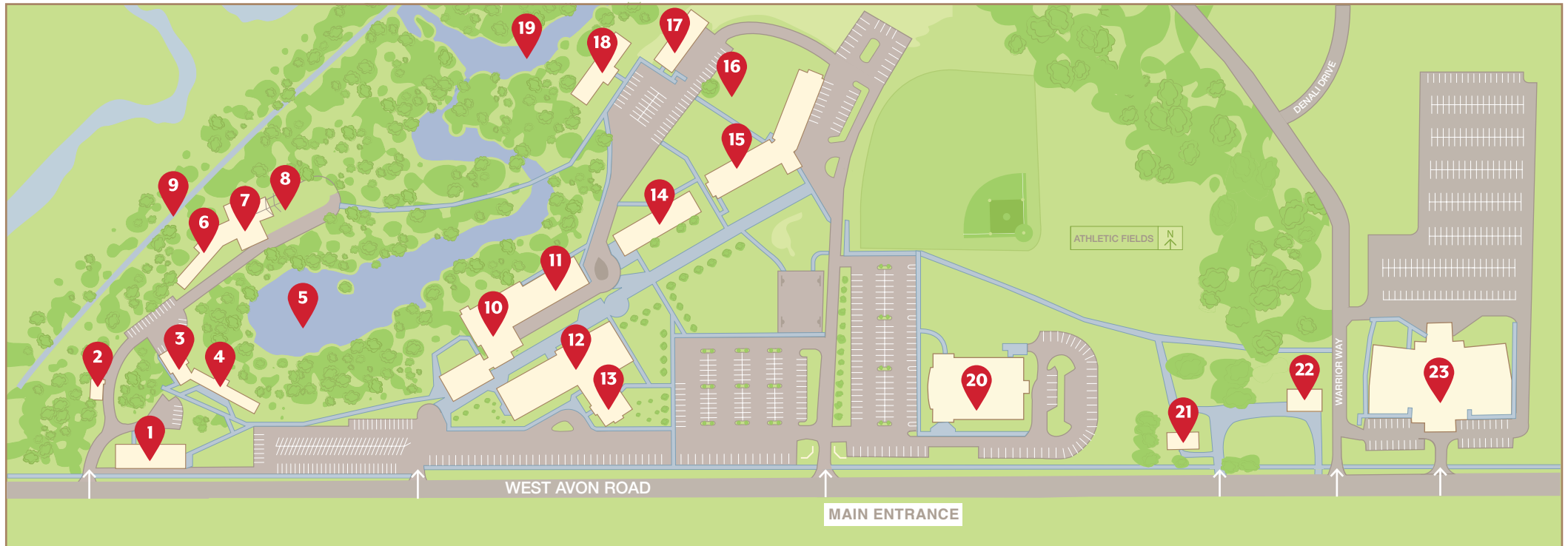
**HL** Ham Library

**RAC** Richardson Academic Center

**The Fletch** The Fletcher Center Cafeteria

**RCUAC** RCU Alumni Center; 250 West Avon Road

# CAMPUS MAP



- |  |  |   |   |
|--|--|---|---|
| <p><b>1 MUIRHEAD CENTER</b><br/>Student Success &amp; Retention<br/>Career Support<br/>Early College<br/>Faculty Offices<br/>Mackinnon Psychology<br/>&amp; Counseling Center<br/>Online Learning</p> <p><b>2 GATEHOUSE</b><br/>Classrooms</p> <p><b>3 GALLAHER CENTER</b><br/>Classrooms<br/>Faculty Offices<br/>Shield Media</p> <p><b>4 GALLAHER CENTER</b><br/>Development &amp; Alumni Relations</p> <p><b>5 LAKE NORCENTRA</b></p> <p><b>6 WARRIOR CENTER</b><br/>Warrior Fitness Center<br/>Athletic Coaching Staff offices</p> | <p><b>7 GYMNASIUM</b></p> <p><b>8 SLATER-MONTGOMERY FAMILY CHAPEL</b></p> <p><b>9 CLINTON RIVER TRAIL</b></p> <p><b>10 ASSOCIATES CAMPUS CENTER (CC)</b><br/>Admissions/Enrollment Services<br/>Business Office<br/>Center for Student Life<br/>Classrooms<br/>Information Technology (IT)<br/>Marketing &amp; Communication<br/>Office of the Registrar<br/>Student Financial Services</p> <p><b>11 WESTSIDE CENTRAL</b><br/>Academic Center for Excellence (ACE Lab)<br/>Auditorium (AUD; Chapel)<br/>Fletcher Center Cafeteria<br/>Isom Atrium (Café)<br/>The CHILL</p> | <p><b>12 ENNIS &amp; NANCY HAM LIBRARY (HL)</b><br/>Classrooms (Lower Level)<br/>Library (Upper Level)</p> <p><b>13 RICHARDSON ACADEMIC CENTER (RAC)</b><br/>Campus Store/Mailroom<br/>Executive Offices<br/>Esports Facility<br/>RCU Theatre<br/>Utley-McCauley Student Center<br/>Gardner Science Center (Upper Level)<br/>Faculty Offices (Upper Level)<br/>Classrooms (Upper Level)<br/>Testing Center (Upper Level)</p> <p><b>14 ALMA GATEWOOD HALL (AG)</b><br/>Residence Hall (Main &amp; Upper Level)<br/>Faculty Offices (Lower Level)</p> <p><b>15 FERNDALE/HOGGATT HALL</b><br/>Residence Hall<br/>Dearborn Commons (DC)</p> | <p><b>16 RIVERSIDE PARK</b></p> <p><b>17 BARBIER HALL</b><br/>Residence Hall</p> <p><b>18 PALMER HALL</b><br/>Married/Non-Traditional Housing<br/>Housekeeping Office</p> <p><b>19 CLINTON RIVER</b></p> <p><b>20 GARTH PLEASANT ARENA</b><br/>RCU Athletics Offices</p> <p><b>21 WHITE HOUSE</b><br/>Athletic Coaching Staff Offices</p> <p><b>22 BARN</b><br/>Operations—Facilities &amp; Grounds</p> <p><b>23 RCU ALUMNI CENTER</b><br/>Classrooms<br/>Faculty/Staff Offices</p> |
|--|--|---|---|

# STUDENT FINANCIAL SERVICES CHECKLIST

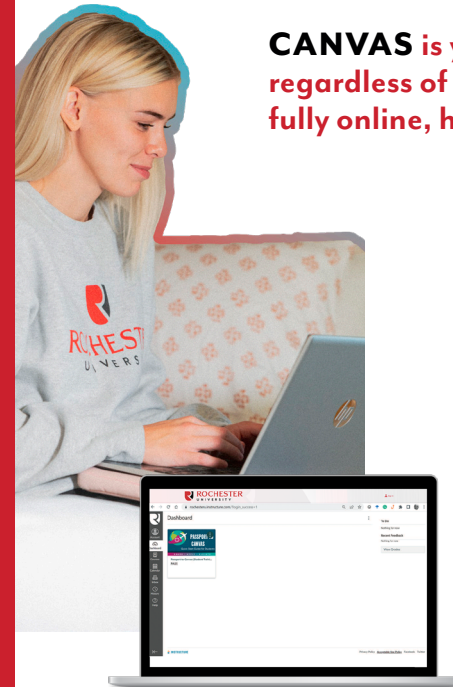
- Complete the 2024-2025 FAFSA form at [studentaid.gov](https://studentaid.gov)
- Complete the Tuition & Fee Promissory Note form
- Complete the Institutional Aid Renewable Policy form
- Complete Entrance Counseling & Master Promissory Note on [studentaid.gov](https://studentaid.gov), if accepting federal loans
- Accept and/or deny all financial aid awards for FA-24 & SP-25 on the student portal
- Complete the Parent PLUS loan application on [studentaid.gov](https://studentaid.gov), if a parent is applying for the federal parent loan
- Submit any outside scholarships, third-party vouchers or Veterans education benefits documents to SFS
- Apply for an alternative loan (optional) at: <https://choice.fastproducts.org/FastChoice/home/228800>

*Students eligible for the Tuition Incentive Program through the State of MI:*

- List your major as an associate's degree
- Failure to do so will result in award being removed from your financial aid package

- Finalize payment arrangements
  - Payment is due by 8.19.24 in order to remain in your scheduled courses

# CANVAS & TEXTBOOKS



**CANVAS** is your electronic classroom, regardless of whether your course is fully online, hybrid or in-seat.



Get started

### How to use Canvas:

Log in with your RCU email address and password. The site verifies users through Microsoft—you may see it change from a URL to a Microsoft link before it turns back to Canvas.

Complete the student training course to acclimate you to Canvas. There is a “Help” link in the site navigation that can assist you with questions.

### Wondering whether fully-online classes are for you?

Scan to take a readiness assessment to help you decide.



Test now

## Textbooks

Placing your textbook order begins by visiting [RCU.edu/textbooks](https://rcu.edu/textbooks). The site then takes you through the process, step-by-step, using Barnes & Noble College. BNC offers the following ordering options:

**+** **SAVE MONEY** with BNC's Guaranteed Buyback program. Keep an eye out for books marked “Condition Verified.” These books are identified at the time of purchase and can be sold back to BNC at the end of the semester.

**Used** Like-new condition (marked on ≤ five pages) printed textbooks

**New** Printed textbooks

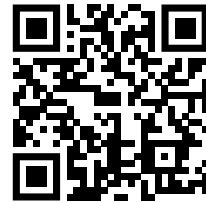
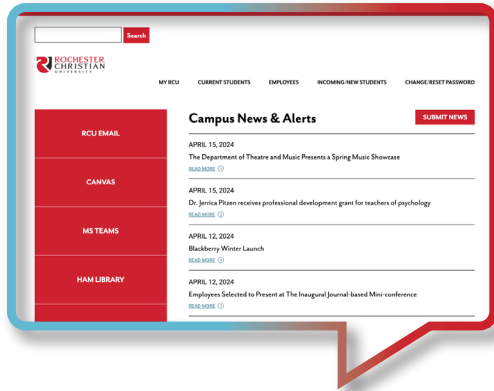
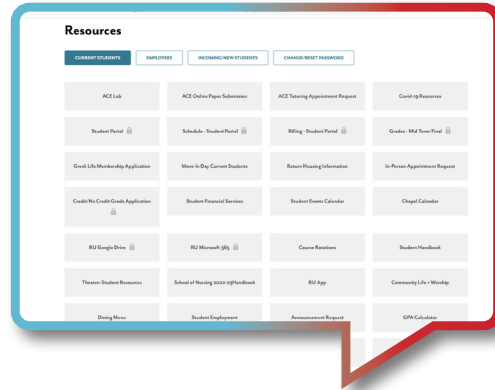
**Digital** A more cost effective, convenient option

**Marketplace** Books from outside vendors

Questions? Barnes & Noble College's customer service contact center is open 24/7. 1-800-325-3252 | [bncollege.com](https://bncollege.com)



# MY.RCU.EDU RCU PORTAL



## MY.RCU.EDU

Scan to access your RCU Portal  
once you've registered for classes.

[CAMPUS RESOURCES](#) | [ANNOUNCEMENTS](#) | [PASSWORD RESET](#) | [MORE](#)

# CENTER FOR STUDENT LIFE

## CHARACTER COMMUNITY SERVICE



**Scott Samuels**

Dean of Students  
VP of MarComm, Retention, CSL  
✉ [ssamuels@rochesteru.edu](mailto:ssamuels@rochesteru.edu)  
☎ 248.218.2045



**Dr. Katelyn Brackney**  
Assistant Dean of Students

✉ [khgrave@rochesteru.edu](mailto:khgrave@rochesteru.edu)  
☎ 248.218.2040



**Dustin McMillan**  
Director of Residence Life

✉ [dmcmillan1@rochesteru.edu](mailto:dmcmillan1@rochesteru.edu)  
☎ 248.218.2211



**Peighton Douglas**  
Hall Director

Student Activities Coordinator  
✉ [pdouglas1@rochesteru.edu](mailto:pdouglas1@rochesteru.edu)  
☎ 248.218.2114



**Katie Kilpatrick**  
Student Services Coordinator

✉ [kkilpatrick@rochesteru.edu](mailto:kkilpatrick@rochesteru.edu)  
☎ 248.218.2231



**Kierstyn Oldenburg**  
Hall Director

✉ [koldenburg@rochesteru.edu](mailto:koldenburg@rochesteru.edu)  
☎ 248.218.2127

### THESE CORE VALUES

influence every interaction and partnership with our diverse student body, fostering a campus community that nurtures personal, relational and spiritual growth.

# COMMUNITY life + worship

## THE COMMUNITY LIFE + WORSHIP (CLW) PROGRAM

at Rochester Christian University exists through chapel and Campus Ministry programming, diversity initiatives, service learning opportunities and more. Each of these experiences lead to holistic spiritual formation among our students.

### Chapel

is a dedicated time the campus community gathers together for worship, teaching and spiritually formative programming.

### Campus Ministry

initiatives focus on developing programs and learning opportunities that nurture spiritual growth for students.

### Service Learning

efforts integrate meaningful community service and reflection to enrich the RCU learning experience, teach civic responsibility and partner in strengthening communities.

### Participation in Community Life + Worship is required student engagement.

- + Refer to the Student Handbook for a detailed overview and description of the CLW program.
- + Find a full Chapel calendar and list of CLW opportunities in the RCU app, at warriorhub.rcu.edu and your MY RCU Portal.



# HOME SUITE HOME RESIDENCE LIFE

## FALL MOVE-IN • AUGUST 24, 2024 • 9 A.M. — 12 P.M.

**Alma Gatewood** (male and female housing)

**Ferndale** (female housing) **Hoggatt** (male housing)  
The lobby of Ferndale Hoggatt is known as Dearborn Commons (DC)

**Barbier Hall** (male housing)

**Palmer Hall** (non-traditional housing)



### Open House

Residence Halls are open for visitation daily from 5 to 10 p.m.

### Open House Rules

1. The door to the resident's room must remain open at all times.
2. No individual is allowed to lie on any bed in rooms with guests.
3. There must be adequate lighting in all rooms when visitors of the opposite gender are present.
4. All guests must be escorted while in the building.
5. The resident hosting a visitor is responsible for all actions of his/her guest.
6. Lobbies are open for co-ed visitation at all times. However, they may be closed at certain times at the discretion of the Residence Life staff.

### Resident Assistant (RA)

Resident Assistants help in residence halls by mentoring students, encouraging them to get involved in the RCU community and making their transition to campus life easier.

Scan to  
apply for  
campus  
housing



# ACE LAB & HAM LIBRARY

## WHERE TO GO WHEN

### The Academic Center for Excellence (ACE)

is dedicated to assisting you with achieving your academic goals by providing free academic support and resources crucial to building and strengthening your skills.

### Tutoring

Tutors are available for writing and basic math support, but they're also on hand to be your study buddy or peer reviewer for any of your other classes. Peer tutors also provide help with study skills and time management.

### Online Support

RCU.edu/ace  
The ACE offers both virtual sessions options as well as asynchronous online paper review.

### Independent Study & ACE Resources

The CHILL is a great place to study on your own or collaborate with a group. It's connected to the ACE so you can easily use ACE resources. It is also very commuter-friendly, with plenty of comfy couches, study tables and outlets for charging.

#### ACE HOURS

Monday—Friday 9 a.m.—4 p.m.  
Closed on weekends

#### CHILL HOURS

9 a.m.—11 p.m. daily

#### NEED TO MEET OUTSIDE OPEN HOURS?

Call 248.218.2173 or email [acelab@rochesteru.edu](mailto:acelab@rochesteru.edu) to set up an appointment in the HAM Library.

Ham Library acquires, organizes and provides access to materials in traditional and emergent formats to encourage research and scholarship in a technological and information-based culture.

### Scan, then browse the FAQ tab to get started.

You'll find info on how to get a library card, borrow materials, search the catalog, reserve a study room and more.



## CAMPUS LIFE

## BECOME & BELONG

### mark your CALENDAR

#### Warrior Week

Saturday, Aug. 24 - Thursday, Aug 29

Join us for a foam dance party, good food, bubble soccer, an outdoor movie night, a worship night and a lot of Warrior fun!

#### Rock the Block

Aug. 26 from 11 a.m. - 1 p.m.

This event is hard to miss as it turns the main RCU sidewalk into a bustling festival featuring food trucks, yard games, and booths repping co-curricular opportunities, local organizations and businesses, and more.

#### Warriors Serve

October 2nd

Students, staff, faculty and alumni spend the day sweeping, painting, pulling weeds, cleaning, organizing, planting and pruning alongside the Micah 6 team in Pontiac's Webster community.

Come for the (awesome) t-shirt, (a great) lunch, and an (inspiring) opportunity to deepen relationships and serve our community!



## Greek Life

Rush Week | Sept. 29 - Oct. 3

Greek organizations exist to support and embody the mission and values of student engagement by uniting students of common interests through the integration of faith, service, learning, living and leading.

Greek life offers growth opportunities through a range of programs, events and activities. The purpose and goals of Greek life are accomplished through formal induction ceremonies, regular meetings, times of devotion, service work, inter-club athletics, and more.

### Theta Chi

*Theta Chi is an all-male club that seeks to revere God, serve one another and their community, be excellent in all they do, and trust their brethren with their lives.*

### Omicron Omega Zeta

*Omicron Omega Zeta is an all-female club focused on serving their community and seeking God's will for their lives.*

## Student Leadership

The Center for Student Life offers Student Leadership opportunities each year through both paid and volunteer opportunities.

The hiring process for paid Student Leadership positions is during the spring semester.

The purpose of RCU's Student Leadership program is to engage students in the exploration of leadership theory and practice. Through meaningful leadership experiences, students will make a positive impact on the Rochester Christian University campus and community, as well as gain knowledge and skills to launch them into their post-graduate pursuits.

Students participating in the Student Leadership program embody the best of RCU and gain valuable experiences in areas such as public relations and marketing, oral and written communication, team building, and organizational management.

Scan to explore more activities, programs and learning experiences



# ON-CAMPUS JOBS, MAILROOM & CAFETERIA

## On-Campus Jobs

is convenient and flexible employment. Managers work with you to create a schedule around your classes and studying. They're also a great way to connect with people outside your field of study, learn how to balance work life with school, and build professional skills.

Student Employment Application and current job openings can be located on your MY RCU Portal

The first step to being considered for a campus job is to complete the Student Employment Application and submit it to:

Ginny May

gmay@rochesteru.edu

Executive Office

## Mail Room/Deliveries

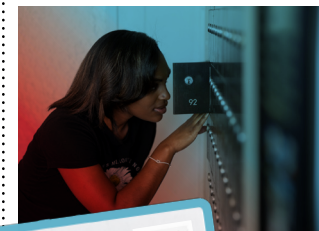
Letters to residential students are delivered to your individual residence hall mailbox. Packages are held and picked up in the Mail Room. Students are notified package deliveries through email. A student I.D. and signature are required at pickup. Outbound letter and small package mailing services are also available here.

Mon.-Fri. | 9 a.m. - 4 p.m.

248.218.2061

mailroom@rochesteru.edu

RAC 121



## Cafeteria

The Fletcher Center Cafeteria, operated by Aladdin Food Management Services, is located in the lower level of the Associate's Campus Center building. The dining hall is set up in a food court style, providing a variety of culinary options catering to your preferences. Find a full Dining Menu in your MY RCU Portal or on the RCU app.

### Commuter Dining

Commuter students can purchase meal plans, or a block of 15, 50, or 75 meals, to use throughout the semester. Students without a meal plan will be charged for cafeteria meals at the door.

*\*Meal plans and block purchases must be used the semester they are purchased; they do not carry over from semester to semester or between academic years.*

Commuters may also deposit money on their ID card. These funds are known as **Warriorbucks** and can be used to purchase items in the Cafeteria, Cafe, Kibo Corner and Campus Store.

### Hours of Operation

#### Monday-Friday

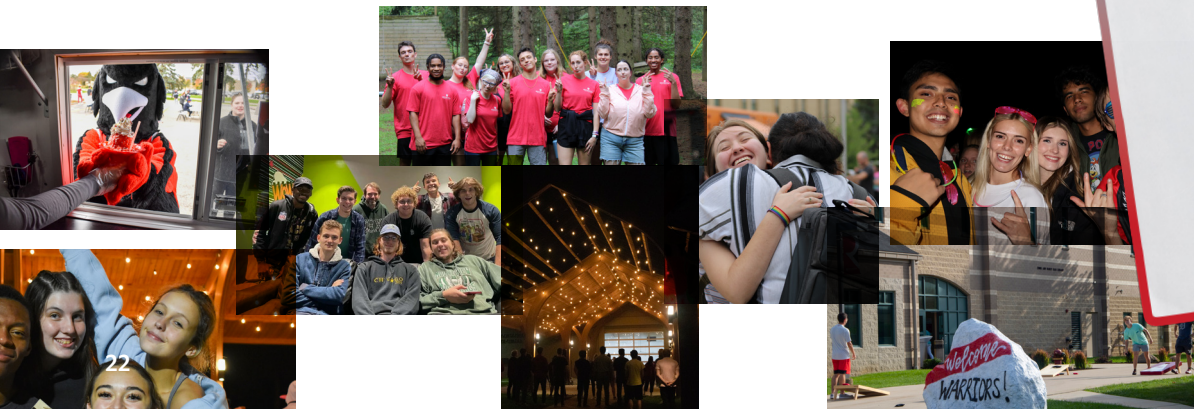
Breakfast 7:30 - 9:30 a.m.  
Lunch 11:30 a.m. - 1:45 p.m.  
Dinner 5-6:30 p.m.

#### Saturday

Brunch Noon - 1 p.m.  
Dinner 5-6 p.m.

#### Sunday

Brunch 11:30 a.m. - 1:30 p.m.  
Dinner 5-6 p.m.





## INTERCOLLEGIATE SPORTS

- Baseball (men's)\*
  - Basketball (men's\* & women's)
  - Bowling (men's & women's)
  - Competitive Cheer (co-ed)
  - Cross Country (men's & women's)
  - Esports (co-ed)
  - Golf (men's & women's)
  - Lacrosse (women's)
  - Indoor/Outdoor Track & Field (men's & women's)
  - Soccer (men's & women's)
  - Softball (women's)
  - Volleyball (women's\* & men's)
  - Wrestling (men's & women's)
- \*varsity & junior varsity*

## CLUB SPORT

- ACHA D1 Hockey (men's)



NATIONAL ASSOCIATION OF INTERCOLLEGIATE ATHLETICS



Meet Crimson the Winged Warrior!

GAME ON  
All RCU students get FREE admission to home games



## NATIONAL CHAMPIONSHIP TITLES IN:

- Men's & Women's Basketball • Women's Volleyball
- Men's Cross Country • Men's Golf
- Men's Soccer • Softball



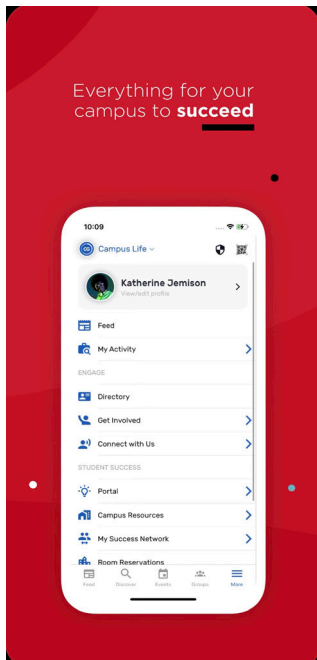
NEW & IMPROVED  
**RCUWarriors.com**

LIVE SCORES  
SOCIAL MEDIA INTEGRATION  
STATS, SNAPSHOTS + MORE

# START CONNECTING TO CAMPUS.



Scan for step-by-step instructions.



Search Campus Groups in your app store, then select Rochester Christian University



## QUICK INFO ABOUT

Student organizations  
CLW  
Athletics  
Student employment  
and more!



## CONNECT

with students,  
faculty and staff through  
a discussion board



## LOST SOMETHING?

Post it in  
the discussion.



## NEED HELP FINDING A BOOK?

One of your classmates  
might be selling one.

## DOWNLOAD FOR FREE



We have a saying around here:

Once a  
**WARRIOR,**  
always a  
**WARRIOR.**

With nearly 12,000 alumni around the world, the RCU Alumni Association seeks to enhance alumni and student connections to the university, while fostering lifetime and active engagement. Every graduate, as well as traditional students who have completed at least 36 credit hours, automatically become members of the alumni association.



## WE LOVE SHARING YOUR STORIES.

Scan the QR codes to watch and read about RU students past and present.



Logan Eling '22



Ronquel Baugh '23



Isabella Aune '23



Hudney Piquant + more



ALUMNI ASSOCIATION

## FIND + FOLLOW

Get connected!  
Scan for quick  
and easy access  
to any and every  
RCU social media.



## CAMPUS ALERTS

### Omnilert Emergency Notifications

Sign up for Omnilert in your MY RCU Portal for instant access to campus-wide alerts/closures sent out via email, text, or both.

### How to sign up

1. Go to [my.rcu.edu](http://my.rcu.edu)
2. Select "RCU Campus Alerts"
3. Login with your RCU email information
4. Set up your alert preferences

# NOTES

# FREE KASASA CASH BACK® CHECKING

# NOTES

OPEN  
ONLINE  
TODAY!



**2%**  
**CASH BACK**  
ON MASTERCARD® DEBIT  
CARD PURCHASES



**CHIEF FINANCIAL  
CREDIT UNION**  
*... more than money*

[www.chiefonline.com/PAID](http://www.chiefonline.com/PAID)

1 Free Kasasa Cash® Back Checking qualifications: For details visit: <https://www.chiefonline.com/accounts/personal-checking/compare-accounts.html> \$0 minimum deposit. Insured by NCUA.



